

EMU Dual Circuit [1000kg] Ergonomic Manipulating Unit

The EMU 1000, with a lifting capacity of 1000kg, is specifically designed for interior use when craneage is too costly, impractical or impossible. Its unique manipulating head enables 'inside-out' glazing. It can angle and push a unit outside the envelope, realign it and then pull it back into position for fixing. In addition, the EMU's on-board drive system provides the mobility to access tight interior areas.



Technical Specifications

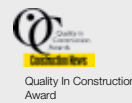
Vacuum system	dual circuit:	1 pump, 2 vacuum tanks
Suitable for lifting	material properties:	gastight
	surface:	smooth
	example:	glass, plastic boards, ceramic plates, sheet metals, coated board, porous materials are possible but must be subjected to testing
Capacity (on smooth and clean surface at 60% vacuum)	jibs 1 & 2:	1000kg
	jibs 3:	1000kg
Length	folded:	3200mm
Width	folded:	1500mm
Height	folded:	2200mm
Weight	counterweights fitted:	3000kg (2500kg without counterweights)
Floor loading (max load)	Due to the many variables involved, point loading diagrams are available on request	
Power requirements	Manipulation of the head and arm is powered by 110v/240v site supply. An LPG-powered generator is available for situations where site supplies are not present.	
Number of suction cups	The number of cups will vary with the task requirement. Standard frame offers 10 cups and 2 extensions arms.	

EMU 1000



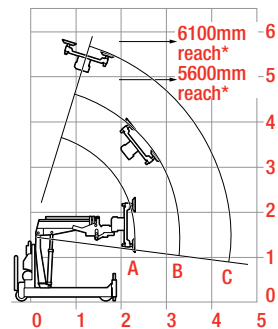
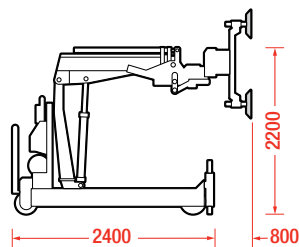
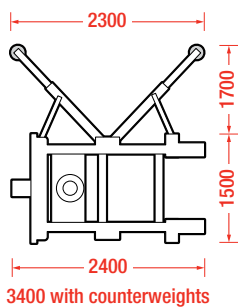
the award winning EMU is specifically designed for interior use when craneage or scaffold is impractical or impossible

- Dual, independent vacuum circuits with two vacuum reserve tanks and two non-return valves
- Vacuum gauge for each circuit
- Capacity 1000kg at jib 1 - 1000kg at jib 2 - 1000kg at jib 3
- Reach 5.6m from floor to pad face
- Working radius 4.6m
- Six outriggers provide stability and reduce floor loading
- Unique, patented head allows a unit to be manipulated with ease through:
 - 80° left and right of centre
 - 80° up and down from centre
 - 360° continuous rotation in either direction
 - 100mm parallel movement either side of head centre axis
- Drive powered by 110v/240v site supply
- On-board maintenance-free vacuum pump powered by 12v battery with integral charger or 110v/240v mains
- Audio-visual low vacuum alert



Dual Circuit EMU · Code GRE10

Technical Data



A = Jib 1 1000kg
B = Jib 2 1000kg
C = Jib 3 1000kg

* From floor level to centre of frame with full extension, full angle and frame vertical