

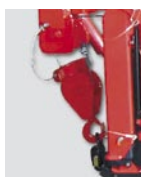
URW-094 [0.995t x 1.5m]

The URW-094 is the smallest UNIC mini crane in the range. At only 595mm wide and weighing 1000kg, it is the world's smallest and lightest mini crane, ideal for manoeuvring into the tightest of working areas. Once in position, the 094 is capable of lifting almost a tonne with its 5.49m long boom allowing a maximum hook height of 5.6m.



Technical Specifications

Crane capacity	capacity:	0.995t x 1.5m
Max working radius	max:	5.17m
Max lifting height	approx:	5.6m
Rope length	max:	10.5m (2 fall), 21m (1 fall)
Dimensions	folded:	1870mm (l) x 595mm (w) x 1290mm (h)
Weight	unladen:	1000kg
Point loadings	Due to the many variables involved, point loadings are only available on request	
Hook speed	approx:	8.5m/min (with 3 layers and 2 falls)
Telescopic system	boom length:	1.73 - 5.49m
	telescoping speed:	3.76m/16 seconds
	boom type:	4 section hydraulically telescoping boom, 4-sided box beam
Derricking angle/speed	approx:	0 - 78° / 5.5 seconds
Slewing angle/speed	approx:	360° (continuous) 1.5min ⁻¹ (rpm)
Traction system	drive:	hydrostatic, step-less forward and reverse
	travel speed:	0 - 2.2km/h
	gradability:	20°
	track ground length:	900mm
	track ground pressure:	36.3kPa (0.37kg/cm ²)
	track width:	150mm
Engine	manufacturer:	Mitsubishi
	fuel:	petrol (LPG dual option)
	maximum output:	5.5kW (7.5PS) / 1800min ⁻¹ (rpm)
	starting method:	electric and recoil start as standard
	tank capacity:	6 litres
Standard equipment	overwinding alarm, computer controlled intelligent voice warning system, radio remote control, intelligent throttle activation	
Optional equipment	1 fall hook block, LPG dual power, low marking tracks	



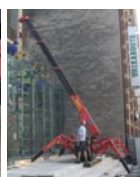
Automatic hook stow



Anti two-block system



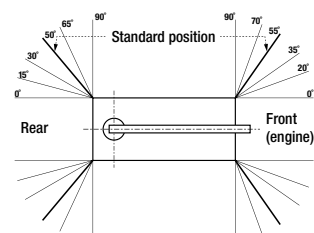
Low marking tracks



Level operation on uneven sites



Outrigger mats are available

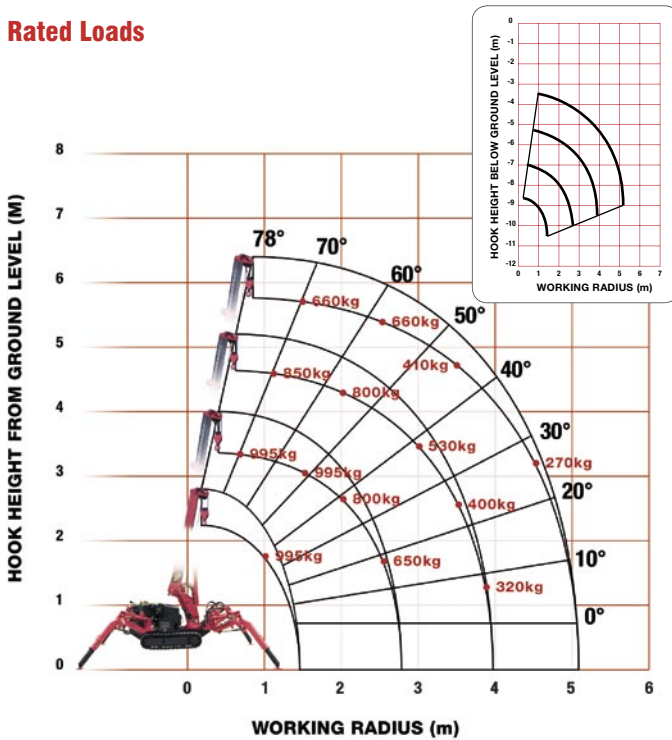




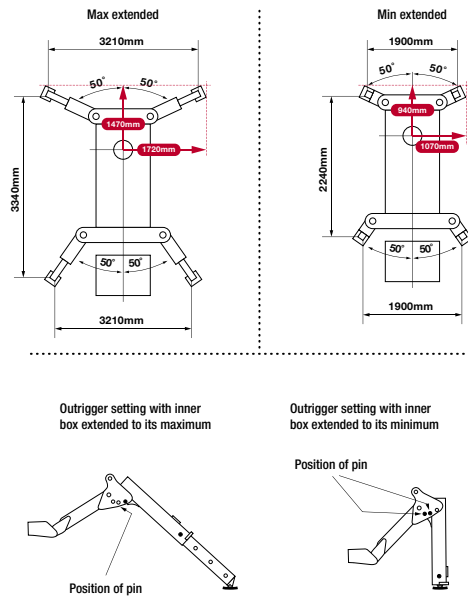
- Capacity 0.995t x 1.5m
- Total width 0.595m
- Max working radius 5.17m
- Max boom length 5.49m
- Petrol powered or LPG dual fuel
- Multi-position configurable outriggers
- Intelligent voice warning system
- Radio remote control as standard
- Intelligent throttle activation for economy and ecology

URW-094 - Code MCU094

Rated Loads



Outrigger Positions



FIRST STAGE EXTENDED 1.73M BOOM LENGTH												
FIRST STAGE	Working radius	m	up to 1.0	1.1	1.2	1.3	1.41					
	Outrigger	Max-extended	kg	995	995	995	995	995				
		Min-extended	kg	800	800	750	700	650				
SECOND STAGE EXTENDED 1.73 - 3.01M BOOM LENGTH												
SECOND STAGE	Working radius	m	up to 1.0	1.1	1.3	1.5	2.0	2.5	2.69			
	Outrigger	Max-extended	kg	995	995	995	995	800	650	580		
		Min-extended	kg	800	800	700	600	410	285	230		
THIRD STAGE EXTENDED 3.01 - 4.25M BOOM LENGTH												
THIRD STAGE	Working radius	m	up to 1.0	1.8	2.0	2.5	2.8	3.0	3.5	3.93		
	Outrigger	Max-extended	kg	850	850	800	650	580	530	400	320	
		Min-extended	kg	500	500	410	285	215	190	145	115	
FOURTH STAGE EXTENDED 4.25 - 5.49M BOOM LENGTH												
FOURTH STAGE	Working radius	m	up to 2.4	2.5	2.8	3.0	3.5	4.0	4.5	5.1	5.17	
	Outrigger	Max-extended	kg	660	660	580	530	410	330	270	210	200
		Min-extended	kg	360	320	220	190	145	105	80	65	65

* Rated loads for the URW-094 include 15kg 2-fall hook block.